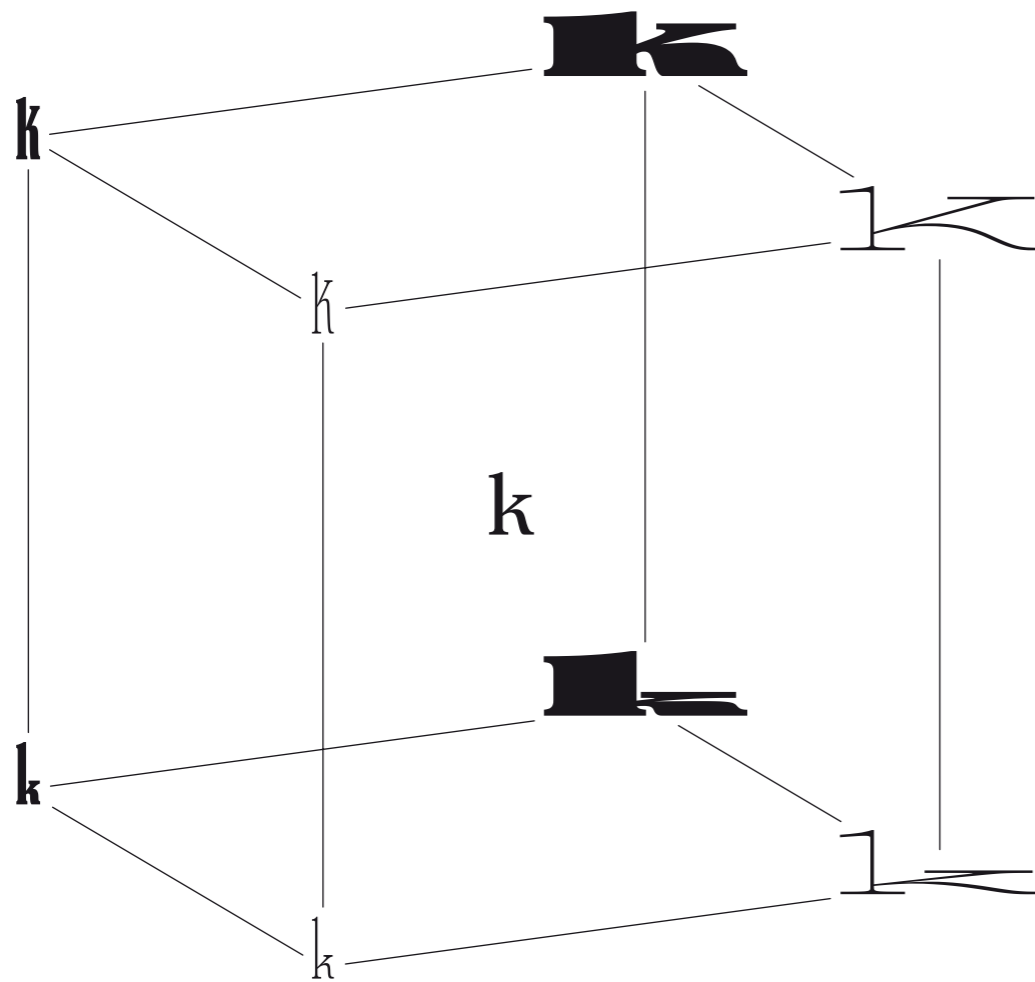


Kedijje



Kedije is an open-source typographic and programmatic system that links voice input to the speaker's pitch, speed, and vocal volume.

Through variable font technology, the individual's prosody is embodied in dynamic and singular typographic forms.

Kedije's shapes are determined both by design-space constraints—from very small and condensed to extremely wide and bold—and by personal preferences. It produces a typeface that sits between Elzevir styles and sign painting.

The design features a mixed-contrast axis, prominent serifs that allow for weight variation, and shapes that employ tool rotation to maintain a consistent stroke weight across widths. This results in a balanced combination of geometric and cursive shapes.

The prosodic system draws inspiration from Pierre Di Sciullo's 2005 Kouije, a modular typeface with the same typographic axes integrated into a handcrafted software tool called Le POUSSE-POUSSE à ONOMATOPÉES, which allowed pre-recorded onomatopoeias to be deformed and visualized in Kouije.

Kedije reinvents the typographic design while preserving the connection to software, now employing modern voice-input technology. Each word is mapped to its pitch, pronunciation speed, and volume, enabling a richer and more faithful visual representation of speech.

The goal of this project is to develop a new communication system that is both digital: applicable in emails, SMS; and physical, for transcribing theatrical or cinematic dialogues. It aims to help for comprehension difficulties or support individuals with certain handicaps. In future iterations, the system will incorporate paralinguistic markers such as respiration, silences, and non-verbal vocalizations, potentially replacing the use of compensatory emojis.

Kedije also exists as a standalone typeface, suitable for a wide range of practical uses.

Kedije Compressed High Thin

Kk

Kedije Compressed High Black

Kk

Kedije Compressed Medium Thin

Kk

Kedije Compressed Medium Black

Kk

Kedije Compressed Low Thin

Kk

Kedije Compressed Low Black

Kk

Kedije Regular

Kk

Kedije Expanded High Thin



Kedije Expanded Medium Thin



Kedije Expanded Low Thin



Kedije Expanded High Black



Kedije Expanded Medium Black



Kedije Expanded Low Black



W **i** **b** **r** **e** **z**

Breath Emphasized Modulated Rehearsed Projection

I r a i n e

Rideaux 17 Exclamé Murmurait Scénographes Alexandrin

Embodying Kedije Shade Fan

M **a** **t** **i** **n**

Chœur Tragédie Comédie Décor Masque & Garçon Nuit

v i f r i s

Spoken Chanted Recited Phrased Ok Intonations Tragedy

140 pt
Évènement

120 pt
Maddeningly

110 pt
Sympathiques

100 pt
Recommençons

60 pt
140 dB for Fireworks,
20 dB for Rustling Leaf.

40 pt
La surdité est, d'un point de vue médical, un état audiologique de déficience auditive considéré par la majorité des entendants comme pathologique. D'un point de vue ethnolinguistique et socioculturel, la surdité constitue

25 pt
For each of these types, there are four different levels or amounts of hearing loss. The first level is « mild hearing » loss. This is when someone is still able to hear noises, but

140 pt

Spécifiques

120 pt

Inauguration

110 pt

Approximated

100 pt

Monopolization

60 pt

Confusions récurrentes
relatives à la surdité!

40 pt

Many non-disabled people continue to assume that deaf people have no autonomy and fail to provide people with support beyond hearing aids, (which is something that must be addressed). 86 Differents non-government

25 pt

Officiellement, le terme utilisé est « déficient auditif ». Les termes « sourd » et « malentendant » sont souvent l'objet d'imprécisions. Une personne sourde peut l'être de

140 pt

Téléphoner

120 pt

Incontrôlable

110 pt

Rudimentarily

100 pt

Mathématiques

60 pt

Mystery of the Chœur?
Listen Ray Charles music

40 pt

L'usage social de la parole a déterminé des langages particuliers nommés idiomes, langues, dialectes, parlers. L'utilisation d'une langue ou le choix des mots n'est pas neutre parce que le langage structure la pensée*.

25 pt

Determining the timeline of human speech evolution is made additionally challenging by the lack of data in the fossil record. The human vocal tract does not fossilize, and indirect evidence

140 pt

Gratefully**Questioning**

110 pt

Appréhender

100 pt

Embouteillage

60 pt

**La voix au théâtre :
prosodie et rythme !**

40 pt

In theatre practice, the human voice functions as a primary expressive instrument. Through prosody — the patterned variation of pitch, stress, rhythm and pause — an actor animates written dialogue

25 pt

During the twentieth century (20s), many theorists of stagecraft analysed vocal prosody in detail. They argued that rhythmic precision and flexible vocal colour could

140 pt

Scénariste

120 pt

Inactivating

110 pt

Chatterboxes

100 pt

Watermarking

60 pt

Une comédie pour les « 8 à 77 ans ».

40 pt

Aujourd'hui, avec le développement des arts pluridisciplinaires, la définition de l'art théâtral s'est élargie, jusqu'à se confondre (354–987 BCE) avec l'expression spectacle vivant, au point que certains grands met-

25 pt

Dans la création contemporaine, les frontières entre les différents arts de la scène (théâtre, mime, cirque, danse...) sont de plus en plus ténues, si bien que certains

140 pt

Théorique

120 pt

Homebodies

110 pt

Overshadows

100 pt

Demonstrative

60 pt

**The Quirky Art of Stage
Speech for Online Mag.**

40 pt

**Le théâtre est né en Grèce, où des
concours tragiques existent depuis
le VI^e siècle av. J.-C. Il est apparu à
Rome à la fin du III^e siècle av. J.-C.
Les représentations font partie des
« jeux » (ludi), fêtes officielles de**

25 pt

**Athenian tragedy—the oldest surviving form of tragedy
—is a type of dance-drama that formed an important part
of the theatrical culture of the city-state. Having emerged**

140 pt

Rouule

120 pt

Okays

110 pt

Fiabables

100 pt

Heights

140 pt

Encre

120 pt

Plume

110 pt

Kicked

100 pt

Shapers

KEDIJE

Kedije Expanded High Thin

140 pt

O

100 pt

DISCO

70 pt

CONTE

40 pt

UNDERPOLAY

25 pt

PHOTOJOURNALISTS

KEDIJE

Kedije Expanded High Thin

140 pt

IR

100 pt

DISCO

70 pt

CONTE

40 pt

UNDERPOLAY

25 pt

PHOTOJOURNALISTS

KEDIJE

Kedije Expanded Medium Thin

140 pt

S

KEDIJE

Kedije Expanded Medium Thin

140 pt

N

100 pt

JOURNAL

100 pt

70 pt

ORANGE

70 pt

40 pt

URBANIZED

40 pt

25 pt

DEMONSTRATIVELY

25 pt

KEDIJE

Kedije Expanded Low Thin

140 pt

A N

KEDIJE

Kedije Expanded Low Thin

140 pt

I N T

100 pt

G H I J

100 pt

70 pt

E F O P

70 pt

40 pt

Houssennat

40 pt

25 pt

Dessynchronizing

25 pt

140 pt

FR

100 pt

Ma

70 pt

Baunji

40 pt

toothiest

25 pt

microscopically

140 pt

IE

100 pt

XK

70 pt

O

40 pt

25 pt

140 pt

A

140 pt

IK

100 pt

B B i i o o

100 pt

70 pt

O O i i v i i a

70 pt

40 pt

Cumfights

40 pt

25 pt

Palaeontologist

25 pt

140 pt

IF

100 pt

LI

70 pt

Ba

40 pt

Rey

25 pt

Uncon

140 pt

IP

100 pt

it

70 pt

ba

40 pt

hjanvit

25 pt

cionably

70 pt

Ilongueur

70 pt

Volume

70 pt

hauteur

70 pt

Scenographie

70 pt

70 pt

70 pt

70 pt

Kedije is an open-source **typographic** and programmatic **system** that **connects** text-based **speech input** to the **pitch, speed,** and **volume** of the speaker's **VOICE**. This **system** enables distinctive **typographic variations** through **variable font technology, thereby** translating the individual prosody.

Kedije est un **système typographique** et programmatique **open source** qui relie la saisie vocale **textuelle** à la hauteur, vitesse et **volume** de la parole du locuteur. Ce système permet des variations **typographiques, singulieres, grâce** à la technologie des fontes **variables, traduisant ainsi** la prosodie **de l'individu.**

**Hold fast to
dreams**
for if **dreams** die,
life is a broken
winged **bird** that
cannot **fly**. Hold
fast to dreams for when
dreams **go**, life is a
barren field
frozen with snow.

J'aimerais tant qu'elle **craque** pour **moi**, mais
ce qui me **pend**, au nez, c'est que je vais partir
tout seul à la **boum** du **quartier hors**
d'atteinte. Les **ta-ka-ta-ka-ta-ka-ta**
dans les **maquis** enfouire mon
visage dans son **cou**. **Ah**,
respirer son parfum,
effleurer son **nombril**,
enlasser son profil.

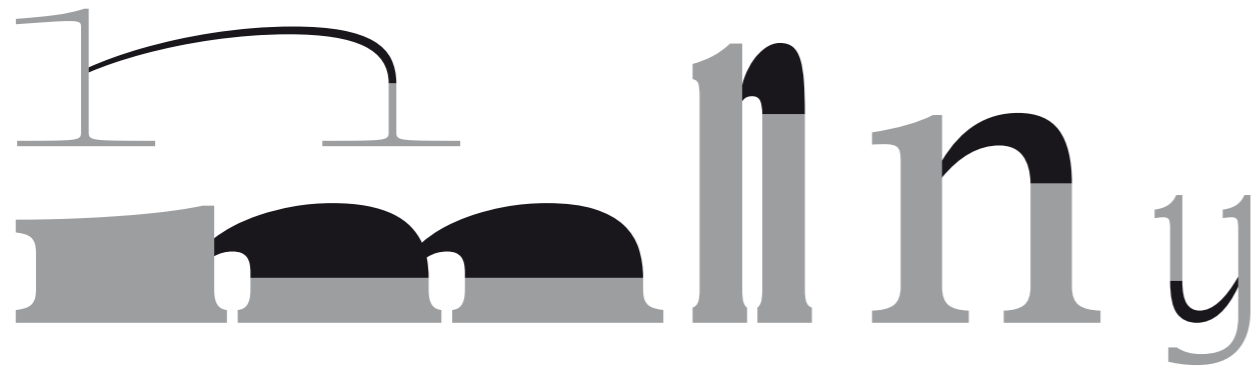
Asymmetrical Elzevir serif in the black weight and more Slab-like in the thin weight



Contrast rotation between weights



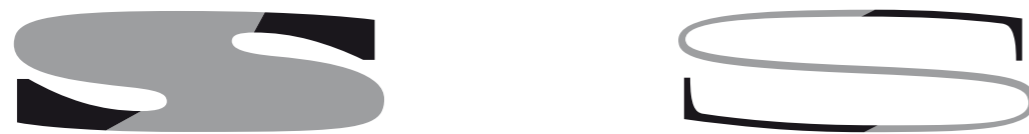
Rounded shoulder with a slightly more incisive entry stroke



Flat entries and exits following the direction of the gesture



Serifs oriented opposite to the gesture



Serifs on horizontals slanted in the wide style and straight in the narrow style



Leg on certain obliques



Asymmetrical serifs



Combination of upright and cursive forms



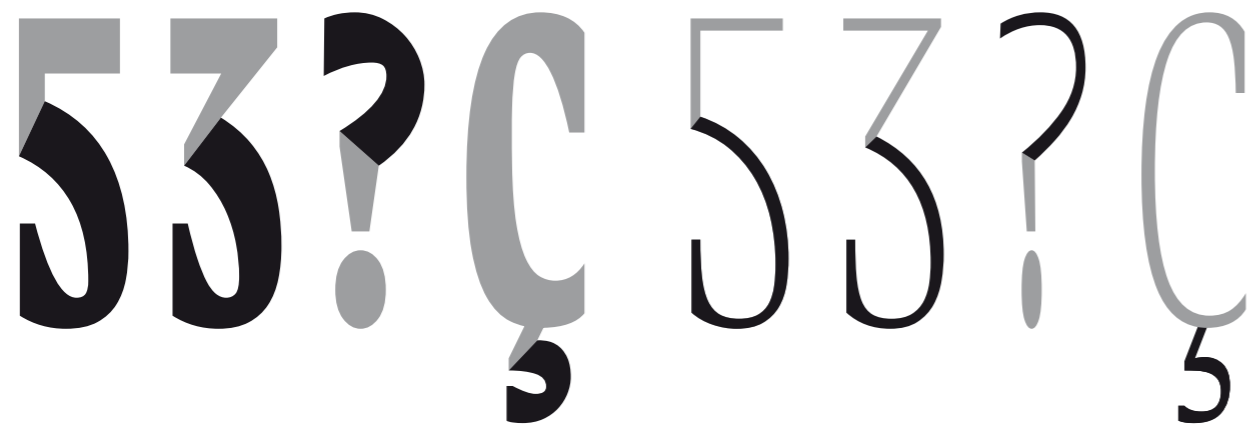
Combination of upright and cursive forms



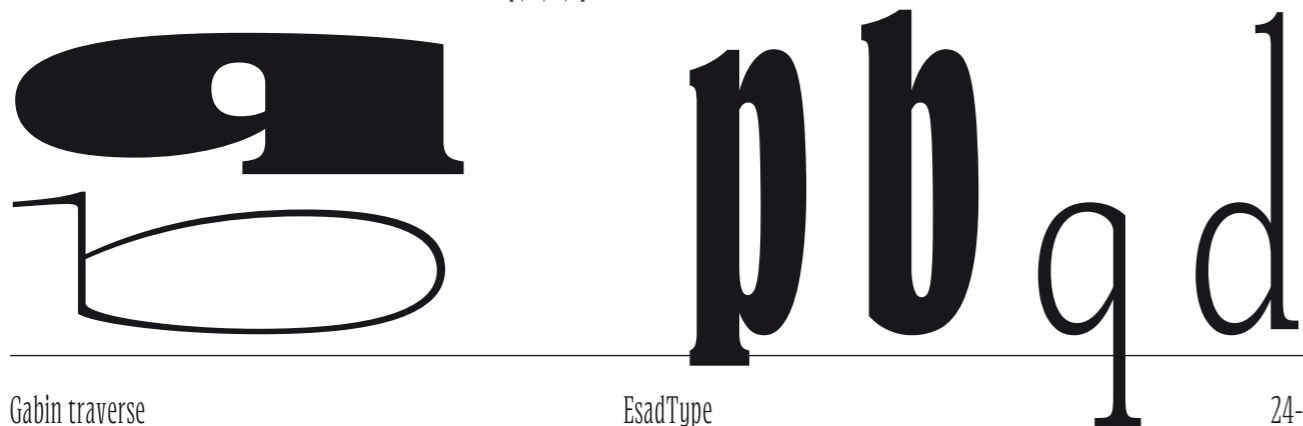
Entries and exits in a quarter turn



Inversion of the contrast axis in certain forms



'p, b, d, q' with different structures



Flat serif exit



Oblique stroke offset in the black weight and aligned in the thin weight



Inktraps in oblique strokes



Adaptive width of diacritics



Different serifs in the entry strokes of ascenders and of lowercase letters at the x-height





Gabin traverse

EsadType 2024–2026

gabin@gabintraverse.art

gabintraverse.art